

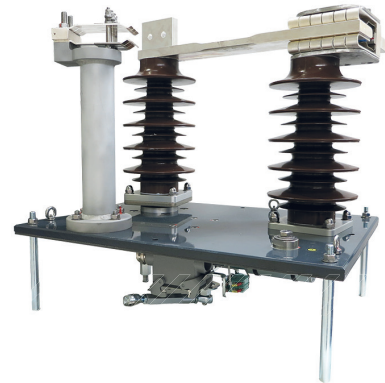


Collecting power to drive your innovation



Disconnecting-earthing switches

Roof-mounted / indoor solution



Roof-mounted switch is integrable into pantograph structure for space and weight saving.

Space and weight saving indoor disconnecting and earthing device for any kind of traction vehicles.

Disconnecting-earthing switches protect by earthing function 1,5 kV and 3 kV circuits during operation under AC overhead lines.

- Connecting pantograph to DC circuits
- Earthing DC circuits under AC catenary
- Can be used also as disconnector of AC circuits on the vehicle

CUSTOMER BENEFITS:

Indoor switch:

- + 5 years maintenance-free
- + 50% space and weight saving solution (in comparison to standard roof mounted solutions)
- + Emergency manual control included

Roof-mounted switch:

- + Robust design able to withstand the repeated overcurrent
- + Modular solution easily adaptable to different configurations
- + Possible to integrate surge arrestor and revolving head for rigid HV connection



Prototype



Ready to quote



Ready to produce



In production



**Indoor disconnecting-earthing switch:
Designed for all AC and DC catenary systems.**

- Available actuation systems
 - Electric drive
 - Manual operation in emergency mode
- Designed to resist high humidity and extreme weather conditions

**Roof-mounted switch:
Robust contact head to withstand
100 kA short circuits.**

- Connecting pantograph to DC circuits
- Earthing DC circuits under AC catenary
- Standardized catalogue solution

References

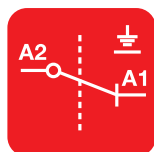
- Locomotive Madhepura, Alstom, India
- High speed train Amtrak, Alstom, USA
- ICNG Coradia Stream, Alstom, Netherlands

**Compliant with IEC 60077, EN50388,
EN45545-2 and NFPA130**

Disconnecting-earthing switches data	Indoor switch	Roof-mounted switch
Temperature range	-25° C to +70° C	-50°C to 70°C
Rated voltage	up to 25 kV AC	
Control voltage	(24, 72) 110 V DC	
Overvoltage category, EN 50124-1	OV3	
Pollution degree, EN 50124-1	PD3	PD4
Weight	27,6 kg	53,8 kg
Dimensions	202,5 x 490 x 407(h) mm	448 x 624 x 593(h) mm
Short circuit withstand, EN50388	- - -	Icc 100 kA peak



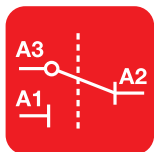
Disconnecting switch



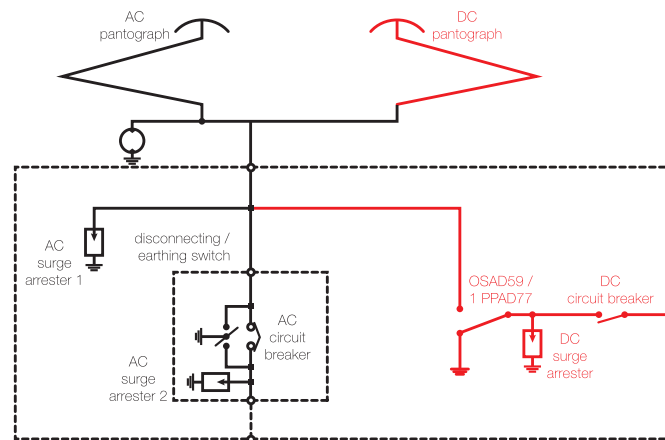
Disconnecting switch - grounding switch



Grounding switch



Change over switch



To discover everything Disconnecting-earthing switches can do, contact

FAIVELEY TRANSPORT CZECH a.s.
 U Přivaděče 1315/3 – 326 00 – Plzeň – Czech Republic
 Phone: + 420 379 207 211 | www.wabtec.com
 E-mail: FAV-info.fcz@wabtec.com

