

Wabtec's Digital Electronics

Event Data Recorder



Electrical

- Compliant to EN50155
- Nominal Voltages: 110VDC, 74VDC, 32VDC, 24VDC
- Reverse polarity, over voltage and transient protected
- Isolated Signal Inputs to IEEE 1482.1

Environmental

- Compliant to EN50125-1
- IP54 with IP67 Crash Hardened Memory
- Operating: -40°C to 85°C (-40°F to 185°F)

Technical Data

- Crash Hardened Memory Module meets or exceeds FRA, IEEE, GM/RT and EEIG crash protection standards
- Records discrete frequency, analog and digital channels. Provides multiple control outputs
- Train network and communication compatibility (MVB, Ethernet, RS232/422/485, CAN, LonWorks)

Meets and exceeds FRA, IEEE, GM/RT and EEIG crash protection standards

Recording vehicle data is essential to operating and maintaining safe and efficient vehicles, and providing an effective health monitoring system. Recorded data provides vital information for accident investigations, train handling studies, fuel conservation, vehicle performance, and preventative maintenance programs.

The Wabtec Event Data Recorder is engineered for maximum flexibility, with multiple mechanical application configurations, including Rack, Base and Custom mounting to meet your immediate needs while allowing for future expandability.

The system is supplemented by a Windows® PC software package for service personnel to download and graphically analyze data from the Event Recorder.

The Wabtec Event Data Recorder is capable of monitoring and recording discrete frequency, analog voltage, current, digital input signals and Train-line network communications, as well

as controlled outputs and optional features that include a Train Monitoring (Alerter) System for operator alertness, remote download capability, speed display, auxiliary light control, horn sequencing, and various other control and monitoring functions.

Its internal Crash Hardened Memory Module (CHM) meets or exceeds the latest FRA and IEEE 1482.1 crashworthy requirements for event recorders. This Crash Hardened Memory Module protects data from the most extreme conditions, including fire, shock, crush and volatile liquids.

Train Monitoring System (TMS) or Vigilance/Alerter can be integrated within the event recorder to ensure operator vigilance at all times. The TMS examines the engineer's control handling actions and will automatically bring the train to a stop should the engineer become incapacitated or unable to perform normal duties.

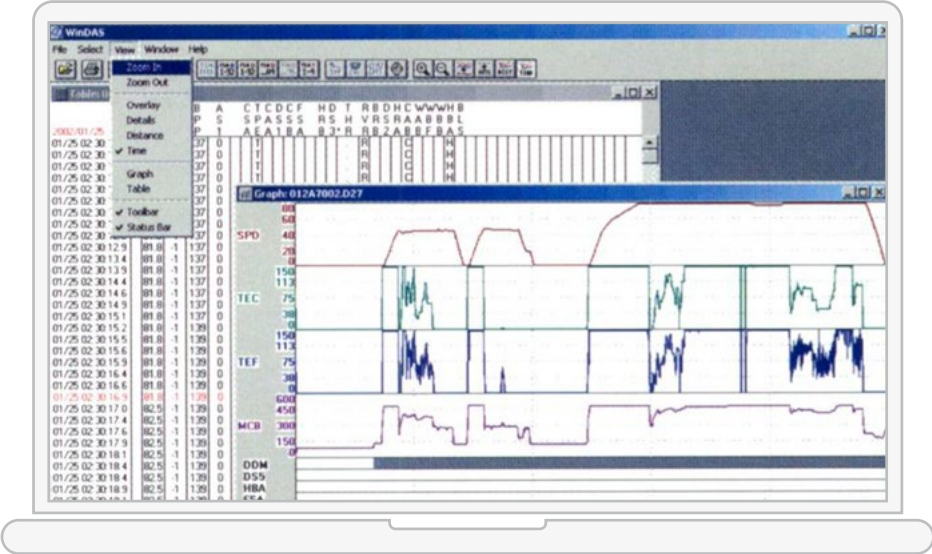
Windows® PC Software

Wabtec Event Data Recorders come complete with Windows-based PC software for downloading and analysis of the recorded data. The Software Download tool allows a realtime view into the recorder and provides for data downloading.

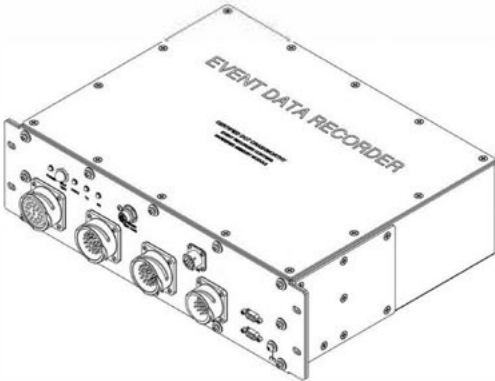
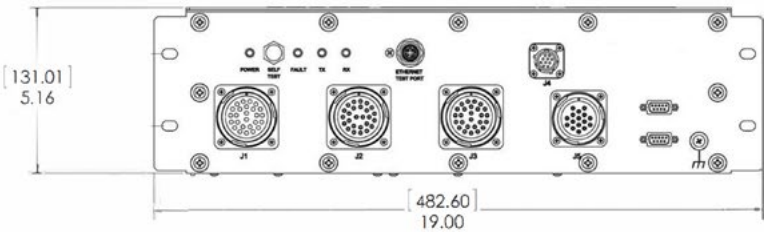
The Windows Data Analysis Software is used to display and print portions of the downloaded data file in table or graphical format. This allows service personnel to analyze recorded data items, such as speed, throttle and brake pressure, using a time and distance reference.

This is a valuable tool for troubleshooting electrical problems and train handling. The software is capable of generating inspection reports for scheduled maintenance.

Wabtec Windows-based PC software is user friendly and compatible with current MS Windows environments.



3U 19" Rack Mount



Compact Base Mount

