



Wabtec Digital Intelligence

# RailDOCS™

## Core Capabilities

- Manages tests, inspections, component configurations, guidelines and interactions
- Tracks & manages employee time
- Offers instant access to info requested during inspection
- Closed loop defect tracking
- Data secured using latest technologies

## Differentiating Features

- Integrated modules maintain all key wayside assets, plans and employee management
- Uses largest database of Railroad OEM asset specifications and inspection data in North America
- Software deployment management uses CRC-matching technology
- Contains powerful user-specified compliance rule engine
- Effectively uses resources for workforce optimization
- Using the latest technology, new tests & inspections can be added by local Admins

## Optimized Outcomes

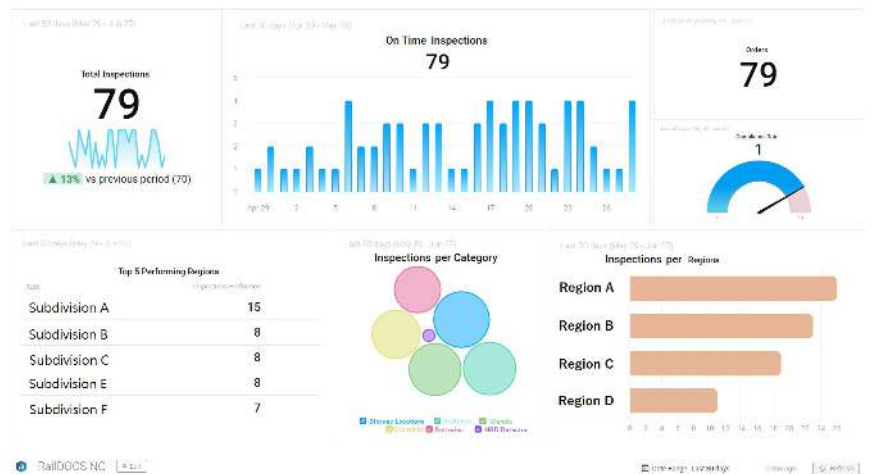
- Helps ensure regulatory compliance
- Boosts employee productivity and performance management
- Manages wayside locations, spares, service bulletins, application software and plans

## Boost productivity and keep wayside maintenance efforts on track.

Ensuring the reliable and efficient operations of your signal and train control systems is essential. Optimizing daily operations of railroad maintenance departments requires a turnkey solution. RailDOCS has been the leader for over 18 years with best in class Support Team.

RailDOCS is a cloud-based mobile software platform for configuration management, testing, inspecting, reporting and maintaining track, signal, yard, bridge and communications equipment. It also provides the means to track and manage signal, train crew and dispatcher employee time and availability. RailDOCS stores over 6 million test forms for 100,000 locations and helps comply with railroad, state and federal regulations.

**The result? Improved preventative maintenance. Greater compliance with regulations. And greater employee productivity.**



wabteccorp.com

RailDOCS is a trademark of Wabtec Corporation.  
Copyright © 2025. All rights reserved.

