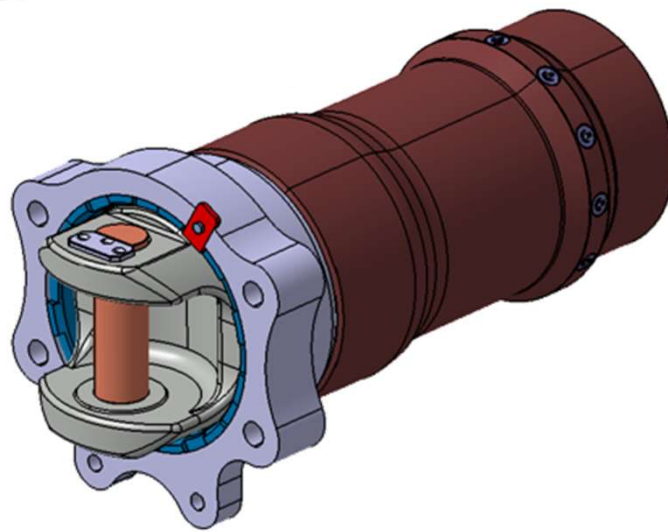


Loco Draft Gear with Crashworthiness



Description : Crashworthiness is ability to mitigate the consequences of a collision in a controlled manner and reduce the risk of injury to the occupants. Car-body flange act as assembly interface (via bolting) with car-body plate. Deformation tube is welded to car-body flange. Elastomer pad assembly is packed in deformation tube between front & end plate.

Application : Vande Bharat Train (Train 18)

Customer : Indian Railways

Key Benefits of Product :

- Draft gear with
- Pads with 110 mm reversible stroke
- Shear Pin feature to take load till design limits

Specifications :

- RDSO Spec. : RDSO/2011/CG-03, Rev-3
- EN 12663
- EN 15227

Technical Features :

- Coupler Type : AAR H / E Type
- Energy Capacity : 35 kJ Min
- Tensile Load : 1000 kN
- Compressive Load : 2000 kN
- Horizontal Articulation : $\pm 18^\circ$ Max.
- Vertical Articulation : $\pm 8^\circ$ Max.

